

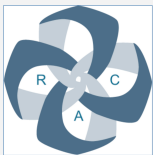
Resilient American Communities (RAC)

An Introduction

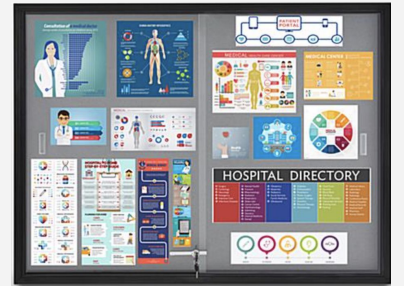


**RESILIENT AMERICAN
COMMUNITIES**

RAC is a multi-organizational enterprise dedicated to decreasing climate change and pandemic impacts, while advancing the mission critical functions within American communities, such as renewable energy systems, housing, health systems, food security, and others. RAC partners with and provides support for community partners, empowering local leaders and community members to enact change in their own communities. RAC is partnered with Ammonoosuc Community Health Services (ACHS) in New Hampshire.



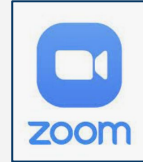
Library Health and Wellness Hubs *Equipment* for Partnering Libraries



- A glass front 3'x4' bulletin board with curated community health information and room for hyper local information
- A Dell PC for public use and surveying, with curated links to reliable community health and resilience information
- A tablet for use with public surveying



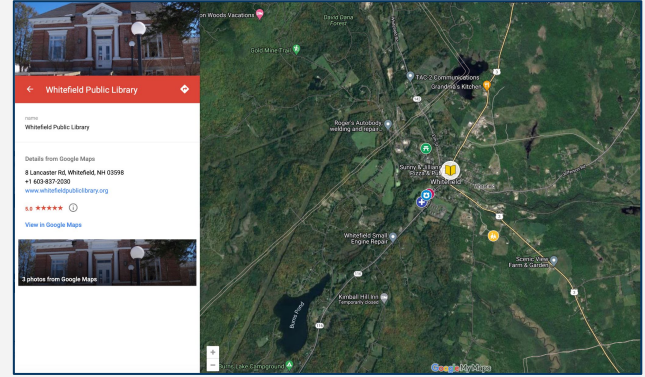
Library Health and Wellness Hubs *Licenses (site-based)*



- A Pro Zoom license (1 year) to help facilitate community events (\$150)
- A Pro Canva license to assist with flyers and branding (\$119)
- 1 yr Microsoft Office license



Library Health and Wellness Hubs *Staff Support*



- Training for staff on community asset mapping using Google maps
- Training to host community dialogue forums
- Use of Trello Project Management Platform



Library Health and Wellness Hubs

Community Data-Informed Decision Support

- Short and long form Needs Assessment surveys customizable for your community
- Analysis of surveys for each community to use in local planning and grant writing

Survey Questions

Warren & Whitefield New Hampshire

1. Would you like to participate in any of the following virtual physical activity programs? (Please check all that apply.)

Walk With Ease (walking at your own pace)

Enhance Fitness Older Adult Fitness

Tai Ji Quan: Moving for Better Balance

Livestrong (for cancer survivors and their caregivers/families)

No

Not sure

2. Would you participate in physical activity programs if they were offered in-person near you? (Please check all that apply.)

Walk With Ease (walking at your own pace)

Enhance Fitness Older Adult Fitness

Tai Ji Quan: Moving for Better Balance

Livestrong (for cancer survivors and their caregivers/families)

No

Not sure

3. What types of programs or recreation opportunities would you like to see your town provide?

4. Would you like to participate in any of the following virtual health education programs? (Please check all that apply.)

Diabetes Self- Management and Support

Diabetes Prevention

Blood Pressure Self-Monitoring Program

Mood Lifters (effective strategies to manage life)

Mail to: 25 Mt Eustis Road

Littleton, NH 03561-3712

Dropped off: _____

Date Dropped off: _____





Data from Community Surveys, Structured Interviews and Community Forums is used to build regional Serious Games events, where residents identify opportunities for collaboration.

Preliminary Data: Strengths

Strengths 4.10.2023	Water Distribution Infrastructure	Environmental Health and Safety	Health Services	Education System	Solid Waste Management	Emergency Management
North Country	6	5	6	7	6	6
Whitefield	5	7	3	5	3	3
Warren	3	4	7	6	6	4
Combined Responses	6	5	5	5	5	5

Legend	
1	1 Most Vulnerable- Not functioning
2	2 Extremely Vulnerable-Major Damage, but functioning at diminished capacity
3	3 Elevated Vulnerability-Minor Damage and functioning
4	4 Not Affected by hazard(s)
5	5 Resilient - functioning, recovered in a timely manner
6	6 Highly Resilient - functioning well, recovered very rapidly
7	7 Resilient and Regenerative - functioning extremely well, recovered from hazards quickly and in a condition less likely to be destroyed or experience major damage in the future

Preliminary Data: Vulnerabilities

Vulnerabilities 4.10.2023	Shelter in Place and Evacuation System	Psychosocial Resilience	Energy Infrastructure - Temperature Management	Renewable Energy vs Grid Energy	Hygiene and Prevention	Sewer/Septic Systems	Climate Threat Mitigation and Transformation	Data and Information Management
North Country	1	1	1	1	5	5	4	1
Whitefield	2	2	2	3	3	4	3	4
Warren	3	2	1	1	1	1	1	no data?
Combined Responses	3	2	3	2	4	4	3	3

What Happens After Serious Games? - Communities Address Their Needs

Community Emergency Response Training



Food Access



[Resource Hub:
Grant Writing for Federal
Opportunities](#)

EXTREME HEAT
TASKFORCE MEETING
Communities Resilient to Extreme Climate Change (CRECC)
Thursday, July 27th @ 6:30PM
Callahan Neighborhood Center
101 N. Parramore Avenue
Orlando, Florida 32801
Question? Contact
Lawanna Gelzer at (407) 953-6599
FREE Heat Stress First Aid Kits Giveaway!

COMMUNITY PARTNERS:

Investing in People Promotes Community Growth!



LeadABetterLife.org
850-640-2028

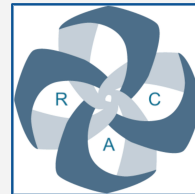


Community Resource Dashboards

- [ACHS RAC North Country Strong](#)
- [New Hampshire Dashboard](#)
- [Coös County Dashboard](#)
- [Grafton County Dashboard](#)



Please direct questions to Janice T. Booher, MS (Jan)
VP Health Initiatives Foundation, Inc.
Email JanBooherHBE@gmail.com
Ph 561-531-0986



Additional Trainings Available on Request

Training	Description
Zoom Training	Training covering the use of Zoom for hosting, presenting, and utilizing Zoom tools. Covering how to access recordings and the different permissions and security measures that can be added to Zoom.
Whole of Society Development Tracking Spreadsheet Entry	How to document the organizations and individuals engaged or interested in building resilience in the North Country. How to obtain the information, how to record it in the spreadsheet workbook and how and when to use it.
Use of RAC Community Dashboards & Data Story	Training in the use of RAC community Dashboards and Data Stories. The RAC Dashboards and Data Stories contain a variety of links, resources, and modules with the goal of increasing community resilience and access to resources and tools.
Use of Google Forms for Survey Outreach	An introduction to the Google Forms platform and it's use for survey creation and use in Survey Outreach. Three ways you can use to push out the survey.
Editing RAC Community Dashboard & Data Story	Initial training on editing RAC Dashboards and Data Stories using the Divi Builder. This training includes basic page and element editing, adding to the Media Library, as well as a brief overview of the publication of a web page on and off menu.
Use of Google Maps (Google Maps 1)	An introduction to the Google MyMaps Platform. This training includes an introduction on to how to access Google MyMaps, creation of a map, and initial orientation to the Google MyMaps platform.

<p>Advanced Editing RAC Community Dashboard and Data Story</p>	<p>This is the second training on editing RAC Dashboards and Data Stories, which is an extension of the preliminary introductory training. Instruction includes exposure to a variety of module types, broader experience with design features, and use of the global module feature and Divi Library.</p>
<p>Creation of Asset and Liability Maps (Google Maps 2)</p>	<p>This is the second training on the Google MyMaps Platform, which focuses on the addition of layers to Google MyMaps, Addition of points and polygons to the map, as well as styling of points and layers.</p>
<p>Contributing to RAC Community Dashboards</p>	<p>A discussion of resilience and how the dashboard can support it in the NH North Country. This includes looking for tools that can be embedded on the dashboard to help people find the resources they need.</p>
<p>Creation of Maps from Secondary Data Sets (Google Maps 3)</p>	<p>This is the third training on the Google MyMaps Platform, which covers the addition of secondary data, more complex styling of layers, and geocoding data for import into the platform.</p>
<p>Contributing to the North Country Data Story</p>	<p>How to work with the Communications and Survey Outreach Work Groups</p>
<p>Use of Trello Board (SET UP DEMO OF OUR WORK W THEM)</p>	<p>An introductory training on the Trello management and project tracking tool.</p>
<p>RAC New Hampshire Resilience System Work Group Posting & Curation</p>	<p>An introduction to the New Hampshire Resilience Sytem, Resilience System Work Groups, and content posting within work groups.</p>

Community Forum Training (1 hr)	A step by step walk through of the activities at the Community Forum, with instruction on how to record information, upload photos and record data, how to do survey interviews, and how to submit the information gathered. Trainings are for the Facilitator Assistants and Recorders.
Survey Outreach Training (2 hr)	Offered once a month, we must have a minimum of two participants registered in at least one week in advance. All aspects of Survey Outreach from paper surveys to electronic surveys, interviewing respondents, recording data and documenting the steps of data stewardship are covered. The Outreach Plan and events at which surveying will take place are discussed.
Serious Games Training (2 hr)	Offered once a month, we must have a minimum of two participants registered in at least one week in advance. A step by step walk through of the Serious Games, with a look at the scenarios in the simulation, instructions for table recorders and facilitators, how to record information and where to submit it.